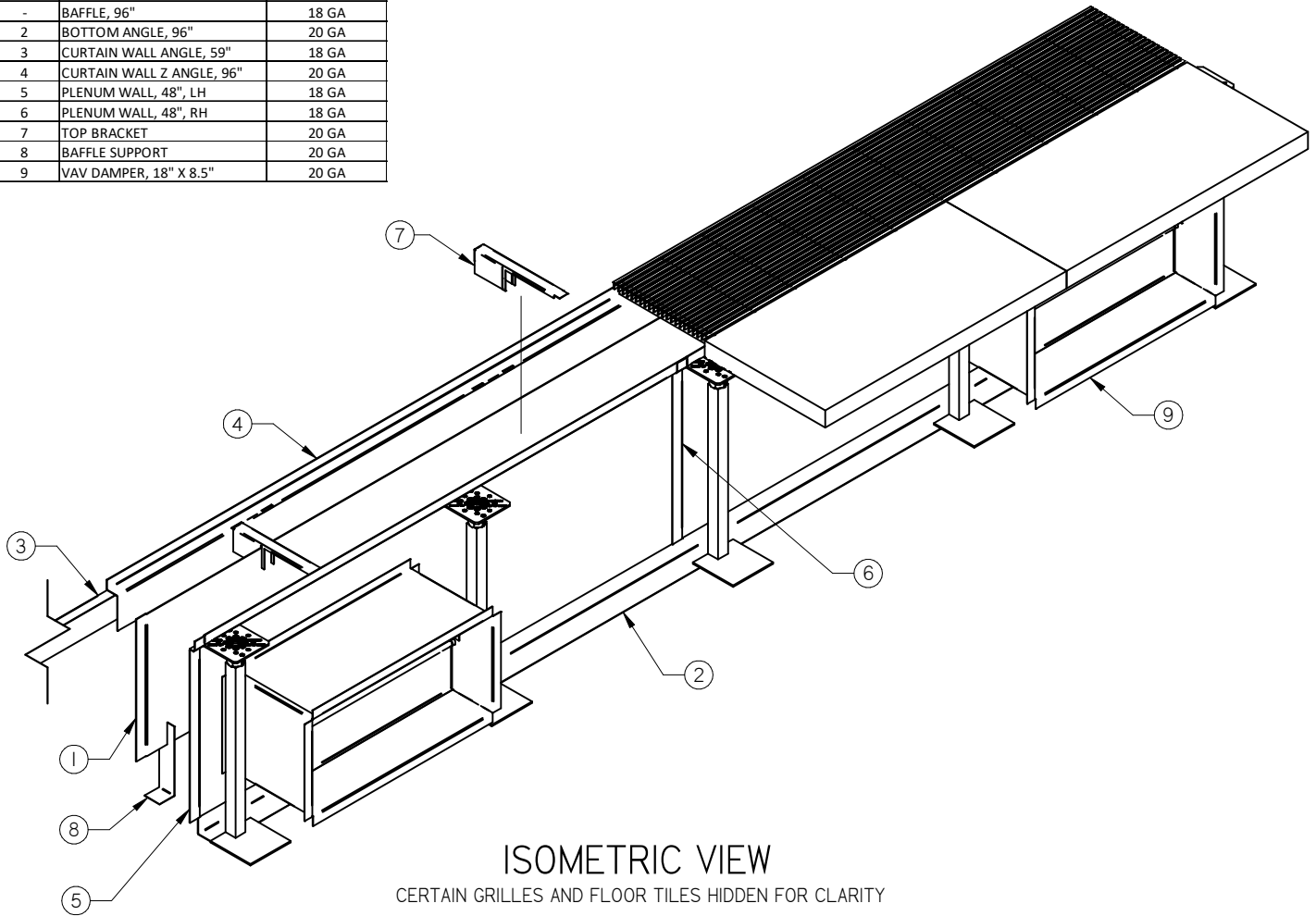


PARTS LIST		
ITEM	PART NAME	THICKNESS
1	BAFFLE, 48"	18 GA
-	BAFFLE, 96"	18 GA
2	BOTTOM ANGLE, 96"	20 GA
3	CURTAIN WALL ANGLE, 59"	18 GA
4	CURTAIN WALL Z ANGLE, 96"	20 GA
5	PLENUM WALL, 48", LH	18 GA
6	PLENUM WALL, 48", RH	18 GA
7	TOP BRACKET	20 GA
8	BAFFLE SUPPORT	20 GA
9	VAV DAMPER, 18" X 8.5"	20 GA


FEATURES:

- All items on parts list shipped loose
- All sheet metal and hardware are mill finish
- Plenum Wall available without cutout for VAV Damper
- Each VAV Damper comes equipped with 24V actuator with MTA connector
- Standard finished floor height is 18" (457), with custom heights available from 14" (356) to 24" (610)
- Parts required per 96" (2438) of CLP:
 - 4 Top Brackets
 - 4 Baffle Supports
 - 8 Core Clips (not shown)
 - 8 Self-Drilling Screws for Core Clips, #6-20 3/8" PN (not shown, included with Core Clips)
 - 40 Self-Drilling Screws for other fastening, #8-18 1/2" HWH (not shown)

NOTE:

LCG CORE ONLY ORDERED SEPARATELY. NOMINAL GRILLE WIDTH = PLENUM OPENING - 0.06" (2)
 MCABLE ORDERED SEPARATELY. 1 MTA CABLE TYPE REQUIRED PER VAV DAMPER

Project Name and Number:

 Description: **CONTINUOUS LINEAR PLENUM (CLP) - 18" FFH**

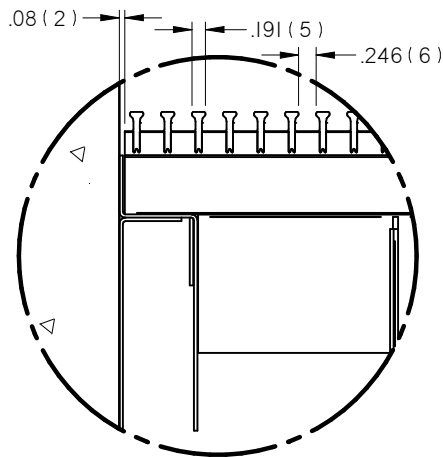
Engineer:

 Submission
 Date:

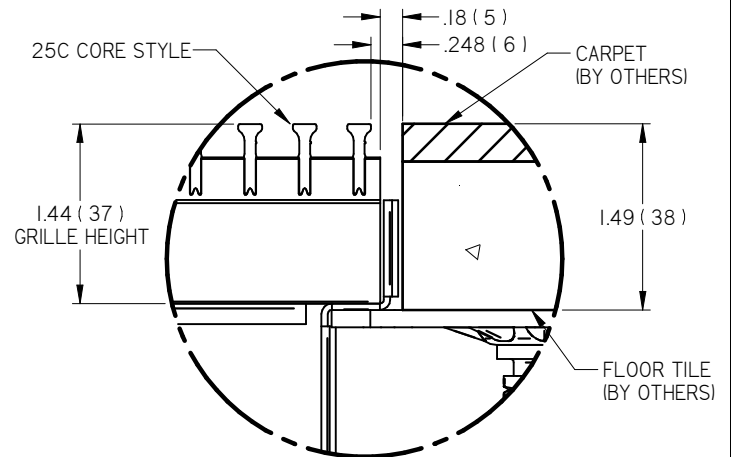
PROPRIETARY AND CONFIDENTIAL
 THE INFORMATION CONTAINED IN THIS
 DRAWING IS THE SOLE PROPERTY OF
 Global IFS. ANY REPRODUCTION IN PART
 OR AS A WHOLE WITHOUT THE WRITTEN
 PERMISSION OF Global IFS IS PROHIBITED

Dwg Release: 274032
 Sheet: 1
 Size: Letter

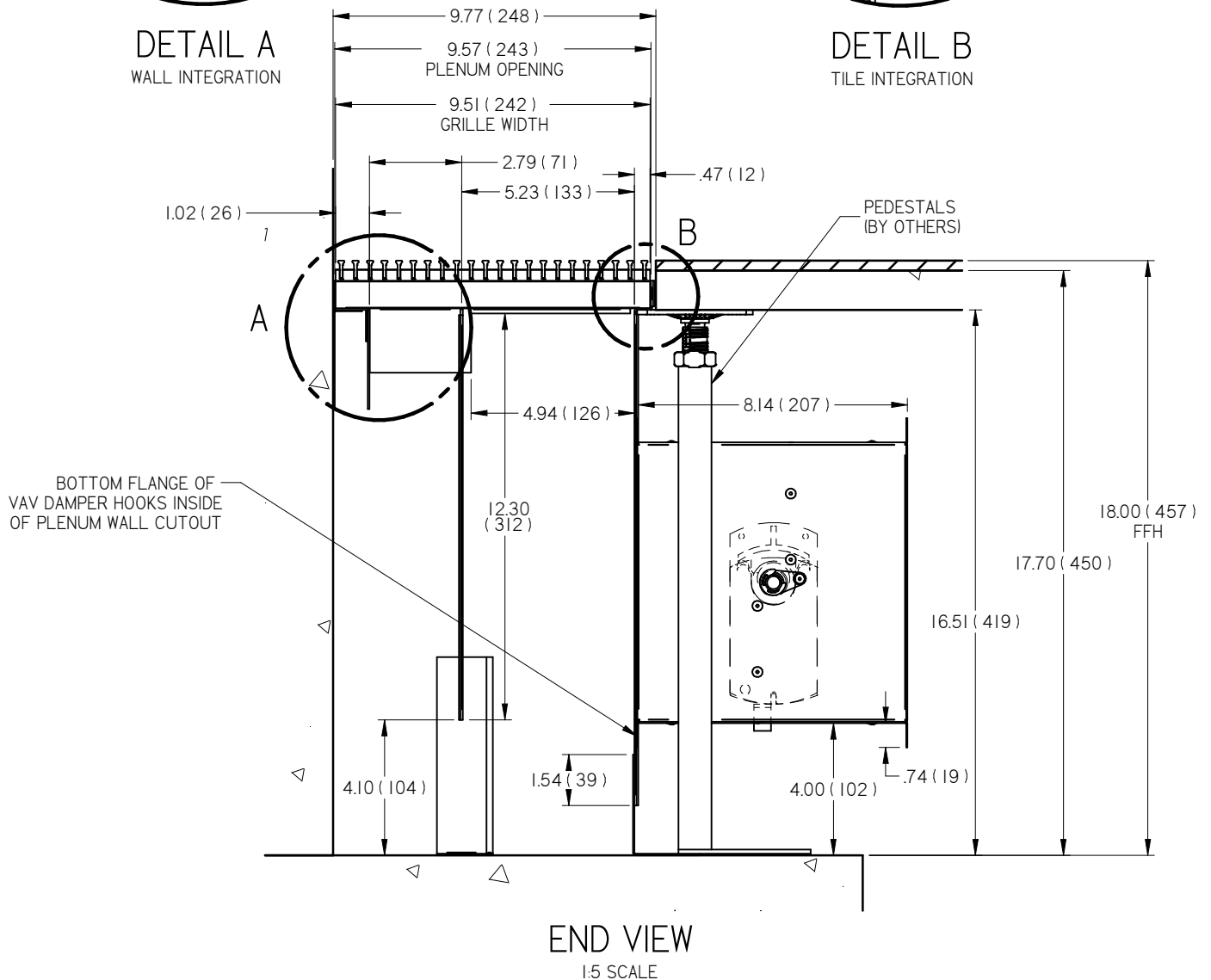
02/25/2022 REV B



DETAIL A
WALL INTEGRATION



DETAIL B
TILE INTEGRATION



Project Name and Number:

Description: **CONTINUOUS LINEAR PLENUM (CLP) - 18" FFH**

Engineer:

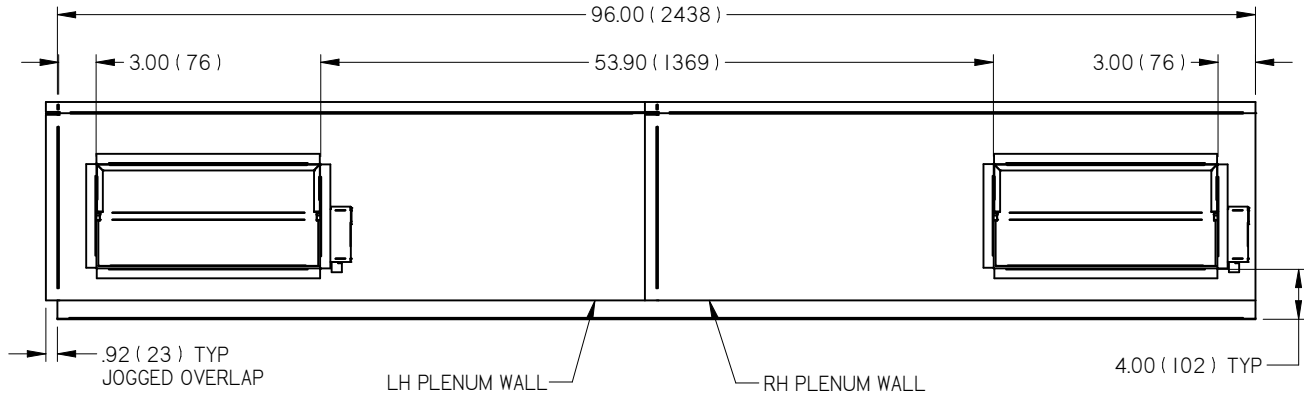
**Submission
Date:**

PROPRIETARY AND CONFIDENTIAL
THE INFORMATION CONTAINED IN THIS
DRAWING IS THE SOLE PROPERTY OF
Global IFS. ANY REPRODUCTION IN PART
OR AS A WHOLE WITHOUT THE WRITTEN
PERMISSION OF Global IFS IS PROHIBITED

Dwg Release: 274032 **Sheet:** 2 **Size:** Letter

02/25/2022 REV B

VAV DAMPER LOCATIONS



Project Name and Number:

 Description: **CONTINUOUS LINEAR PLENUM (CLP) - 18" FFH**

Engineer:

 Submission
Date:

 PROPRIETARY AND CONFIDENTIAL
 THE INFORMATION CONTAINED IN THIS
 DRAWING IS THE SOLE PROPERTY OF
 Global IFS. ANY REPRODUCTION IN PART
 OR AS A WHOLE WITHOUT THE WRITTEN
 PERMISSION OF Global IFS IS PROHIBITED

Dwg Release: 274032 Sheet: 3 Size: Letter

02/25/2022 REV B