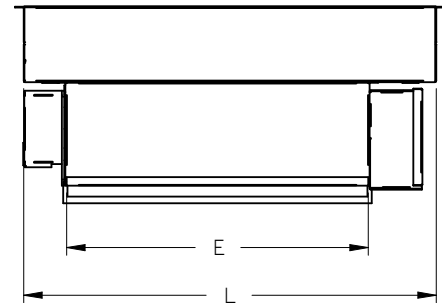
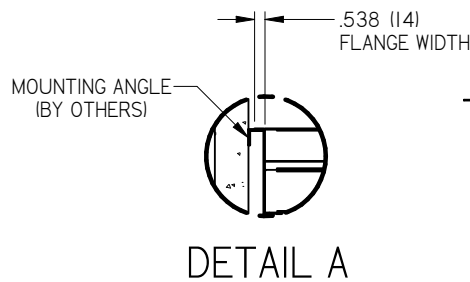
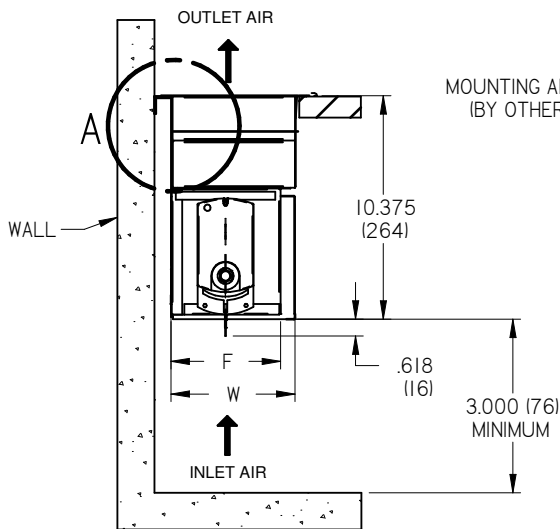


PARTS LIST	
ITEM	PART NAME
1	ELECTRIC COIL
2	ELECTRICAL ENCLOSURE
3	24V ACTUATOR
4	MOTORIZED VAV DAMPER
5	REMOVABLE ENDCAP

	NOM. SIZE	ROUGH OPENING	UNIT OVERALL		INLET SIZE		EC (W)
			L	W	E	F	
<input type="checkbox"/>	24 X 6 (610 X 152)	24 X 6 (610 X 152)	23 7/8 (606)	5 7/8 (149)	17 1/2 (445)	5 1/8 (130)	1800
<input type="checkbox"/>	48 X 6 (1219 X 152)	48 X 6 (1219 X 152)	47 7/8 (1216)	5 7/8 (149)	41 1/2 (1054)	5 1/8 (130)	3450

NOMINAL SIZE	120-1 V			240-1 V			277-1 V		
	AMPS	MCA	MOP	AMPS	MCA	MOP	AMPS	MCA	MOP
24 X 6	15	20.4	25	7.5	10.2	15	6.5	8.9	15
48 X 6	-	-	-	14.4	19.6	20	12.5	17	20


FEATURES:

- 20 GA Steel Construction, Black Finish
- Drop in installation from room side
- Comes with plenum rated control cable 25ft length. Optional lengths of 15ft or 35ft available
- Multiple modular connection options for field daisy-chaining between the terminals
- Continuous linear grille available in anodized finish or painted finish to match curtain wall mullions
- Electric coil
- Airflow requirement is 70 cfm/kW

HEATER ELEMENT:

- ☐ 120/1/60 ELECTRIC (24" MODEL ONLY)
- ☐ 240/1/60 ELECTRIC (24" OR 48" MODEL)
- ☐ 277/1/60 ELECTRIC (24" OR 48" MODEL)
- FINNED STRIP HEATER; MULTIPLE ELEMENTS MAY BE SUPPLIED ON LONGER UNITS
- TRANSFORMER INCLUDED

NOTE: LBG 1000 STYLE ORDERED SEPARATELY. NOMINAL GRILLE SIZE = NOM LENGTH - 0.250" (6) X 5.75" (146)

Project Name and Number:		PROPRIETARY AND CONFIDENTIAL THE INFORMATION CONTAINED IN THIS DRAWING IS THE SOLE PROPERTY OF Global IFS. ANY REPRODUCTION IN PART OR AS A WHOLE WITHOUT THE WRITTEN PERMISSION OF Global IFS IS PROHIBITED		
Description:	HHT - Hyper Heat Terminal (Electric)			
Engineer:	Submission Date:			
		Dwg Release:	Sheet:	Size:
		272752	1	Letter