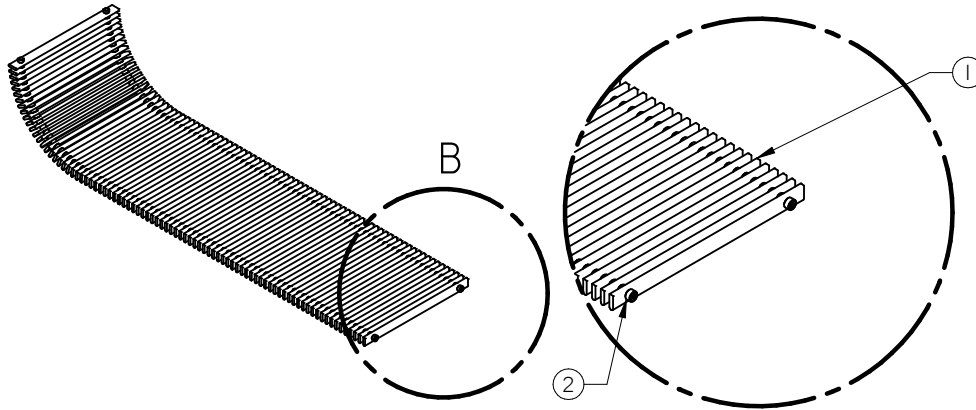


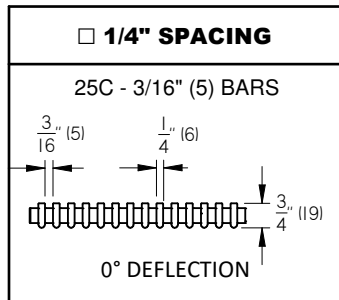
TAG :



Parts List	
ITEM	PART NAME
1	CORE BAR
2	POLYMER SPACER

	Min	Max
Length	12 in.	72 in.
Width	6 in.	14 in.

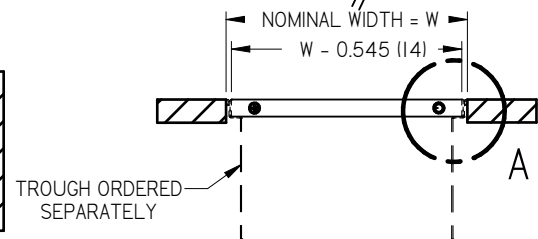
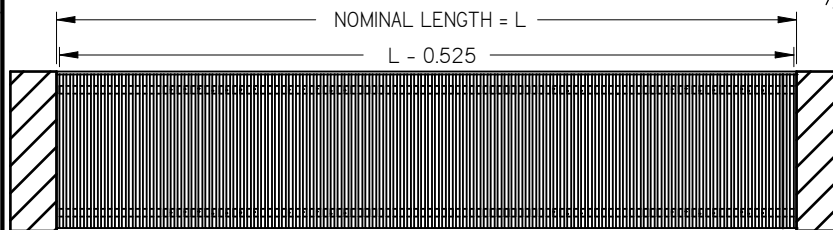
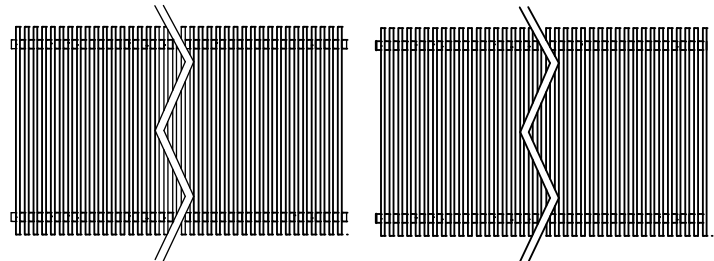
### BAR SPACING



### DETAIL B

### END CONDITION

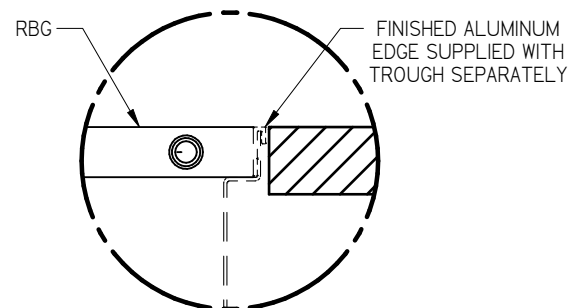
☐ **XX - SPACERS BOTH ENDS** ☐ **XY - SPACER ON ONE END**



### FINISH:

- ☐ B11 - Bright White
- ☐ B12 - Standard White
- ☐ B13 - Off-White
- ☐ B15 - Metallic Gray
- ☐ B17 - Black
- ☐ B25 - Custom Matched Color
- ☐ PC12 - Prime Coat
- ☐ 66 - Brushed and Clear Powder Coat
- ☐ MILL - Non Treated from Mill - Unpainted

- ☐ PA - Prepared Aluminum  
Mill finish factory cleaned
- ☐ AB - Anodized Black
- ☐ AC - Anodized Clear
- ☐ ALB - Anodized Light Bronze
- ☐ AMB - Anodized Medium Bronze
- ☐ ADB - Anodized Dark Bronze
- ☐ ACH - Anodized Champagne
- ☐ ASPL - Special anodized color  
other than above



### DETAIL A

### FEATURES:

- Nominal Size (L X W) = Rough Opening
- Black polymer spacers (UL94 & UV stabilized)
- Stainless steel spring
- Extruded aluminum construction with bars parallel to the short dimension
- Sections can be joined for continuous appearance
- Designed for light foot traffic floor applications only
- Not designed to withstand loads from mechanical equipment such as carts, forklifts, etc.
- Various anodized finishes available

Project Name and Number:

Description: **RBG - Roll Up Bar Grille**

Engineer:

Submission  
Date:

PROPRIETARY AND CONFIDENTIAL  
THE INFORMATION CONTAINED IN THIS  
DRAWING IS THE SOLE PROPERTY OF  
Global IFS. ANY REPRODUCTION IN PART  
OR AS A WHOLE WITHOUT THE WRITTEN  
PERMISSION OF Global IFS IS PROHIBITED

Dwg Release: 272704 Sheet: 1 Size: Letter

09/13/2022 REV B